

# MONTHLY MEMBERSHIP PROGRESS REPORT

District 201W2

Results as of: 4/30/2024

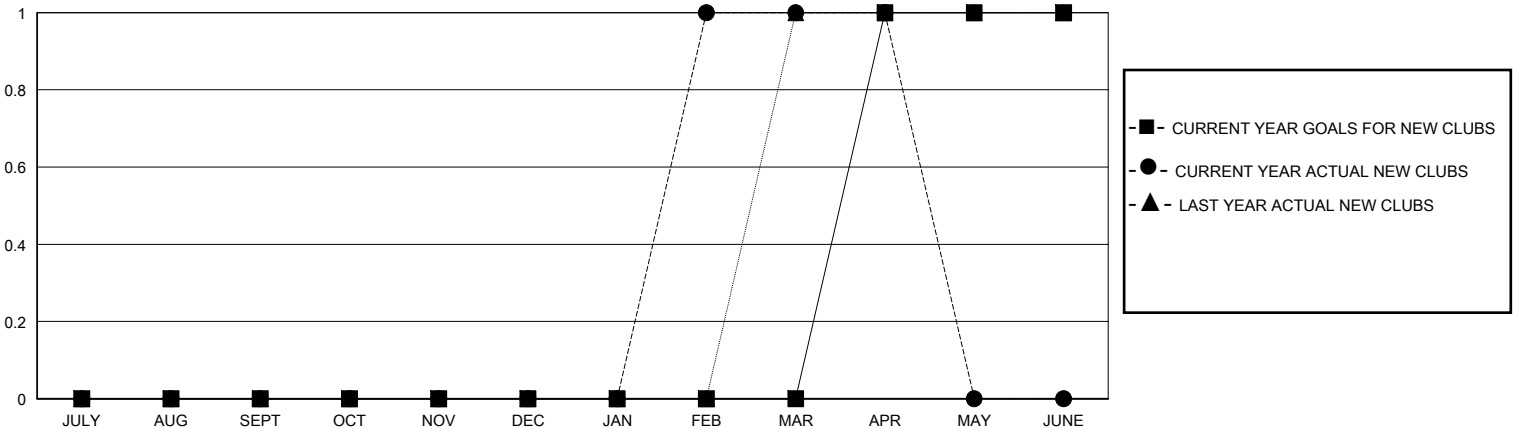
GMT:

LOCATION AUSTRALIA

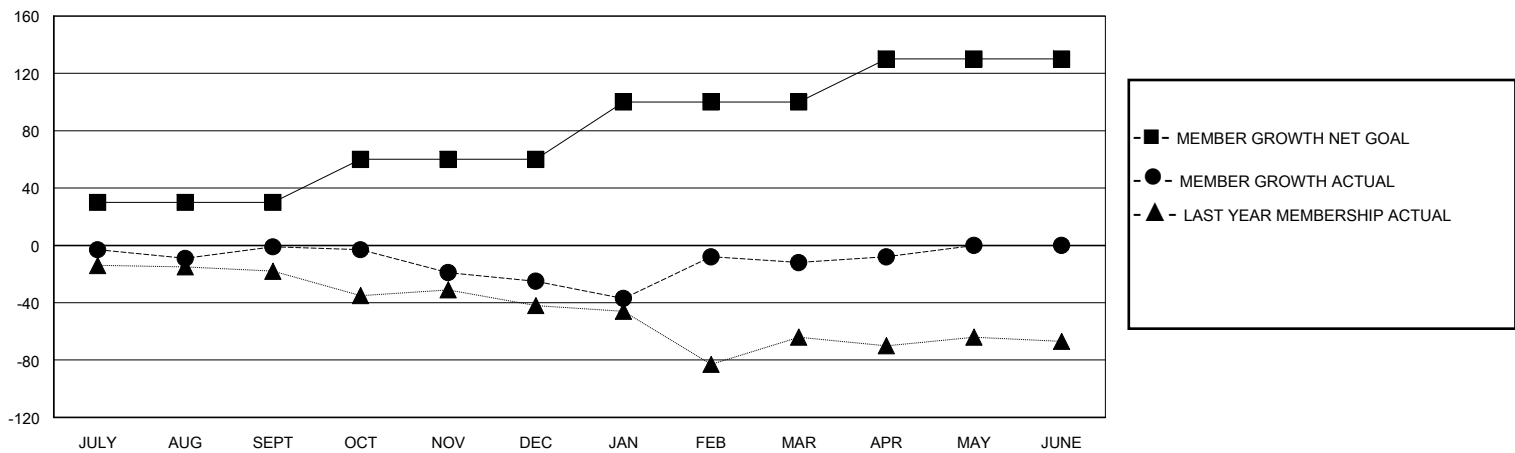
GMT CA

Clubs				Members			
RESULTS FOR 2023-2024				RESULTS FOR 2023-2024			
QUARTER	NEW CLUB GOAL	NEW CLUBS	DROPPED CLUBS	QUARTER	MEMBER GROWTH NET GOAL	MEMBER GROWTH ACTUAL	DROPPED MEMBERS ACTUAL (including transfers)
JULY/AUG/SEPT	0	0	0	JULY/AUG/SEPT	30	41	38
OCT/NOV/DEC	0	0	0	OCT/NOV/DEC	30	35	52
JAN/FEB/MAR	0	1	1	JAN/FEB/MAR	40	66	42
APR/MAY/JUNE	1	0	0	APR/MAY/JUNE	30	16	10

GOALS AND ACTUAL NEW CLUBS CUMULATIVE



GOALS AND ACTUAL MEMBERS CUMULATIVE



DROPPED CLUBS: 1	39 CLUBS OF 62 ADDED 1 OR MORE NEW MEMBERS	<b>GENDER DISTRIBUTION</b> MALE 809 (64.31%) FEMALE 449 (35.69%)
<b>DROPPED MEMBERS</b> DECEASED 20 CLUB CANCELLED 0 OTHER 122 TOTAL 142	<a href="#">CLICK HERE FOR CUMULATIVE MEMBERSHIP DATA</a>	TOTAL FAMILY UNIT MEMBERS 219 FAMILY MEMBERS PAYING HALF DUES 112